

Uncovering Areas of Vulnerability in Alachua County

Sydney Folsom • Katie Martin • Nicole Miller • Angelica Moncada

“Vulnerability, the susceptibility to harm, results from an interaction between the resources available to individuals and communities and the life challenges they face.”

(Mechanic & Tanner, 2007)

Background

- The US has the highest rate of incarceration in the world.
- The concentration of incarcerated individuals is disproportionately distributed.
- Millions of dollars are spent each year to incarcerate the residents of single neighborhoods.
- These neighborhoods are typically home to a high density of children.
- Shift from human- to automobile-scale design

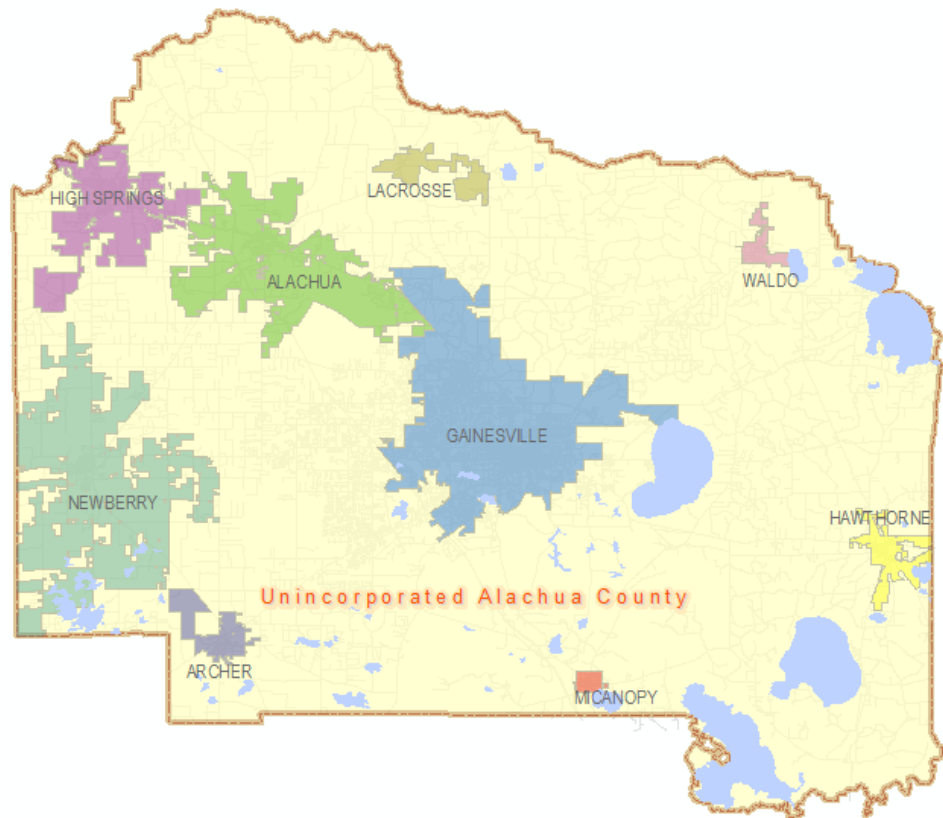
2010 Census Data

Alachua County

- Total population: 247,336
- Below poverty level: 23.6%
- Median household income: \$40,644
- Persons per household: 2.32
- Land area in square miles: 875.02
- Persons per square mile: 282.7

Gainesville

- Total population: 124,354
- Below poverty level: 34.6%
- Median household income: \$30,036
- Persons per household: 2.20
- Land area in square miles: 61.31
- Persons per square mile: 2,028.40



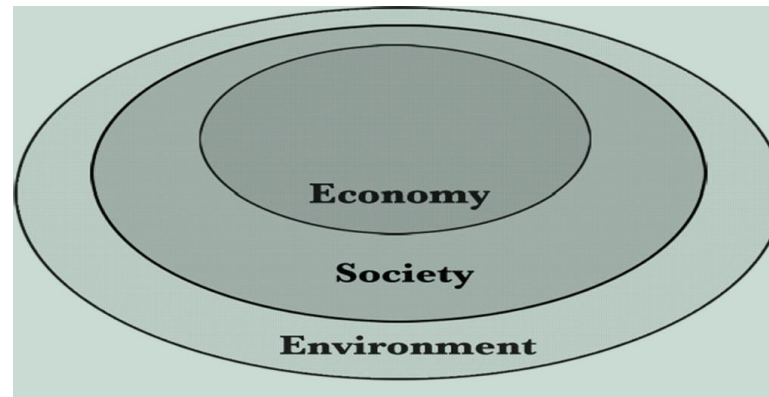
Objective

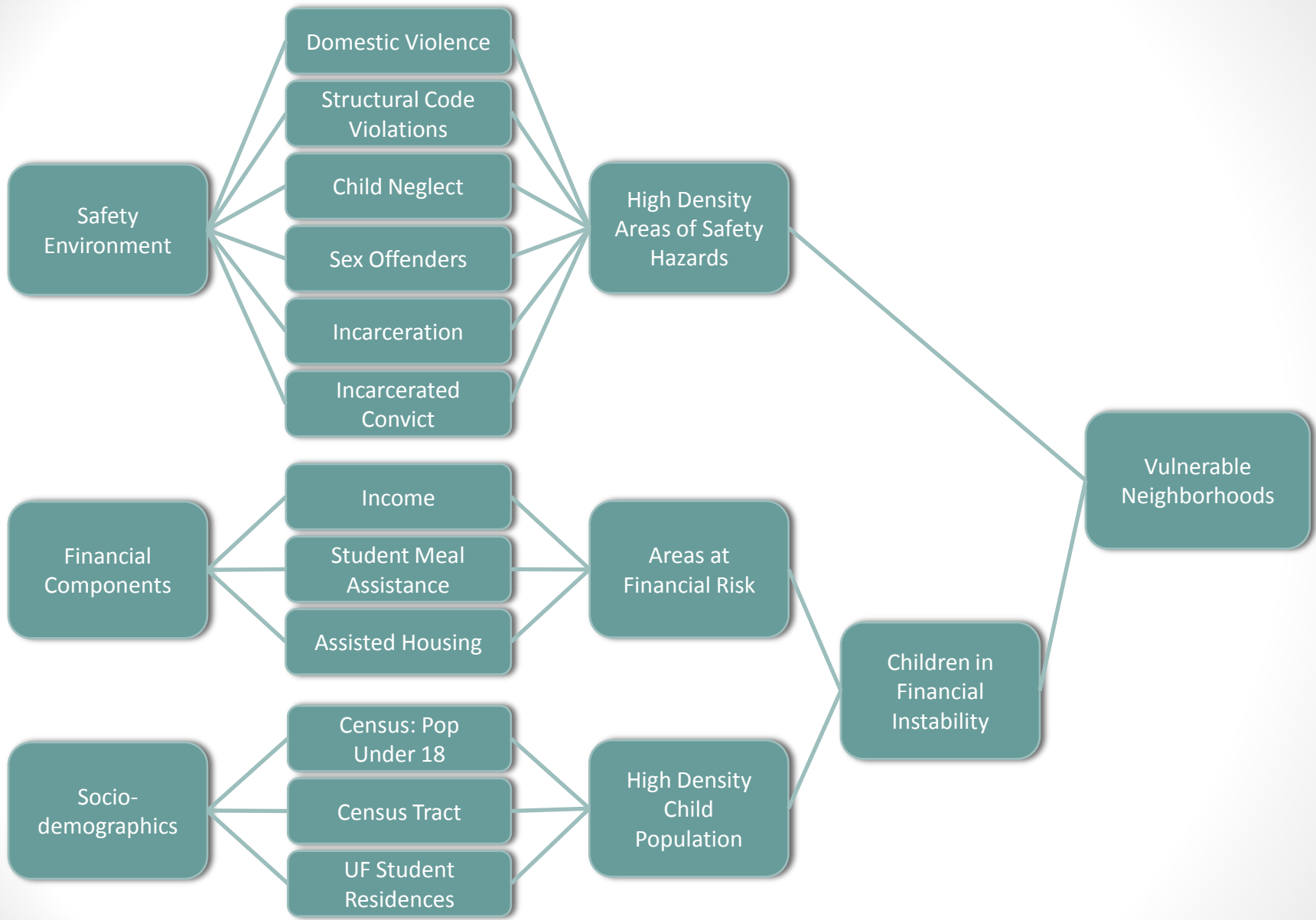
- To identify areas of vulnerability in Alachua County using GIS data based on three components:

1. Safety Environment

2. Financial

3. Socio-demographic





Variables Influencing Child and Adolescent Outcomes

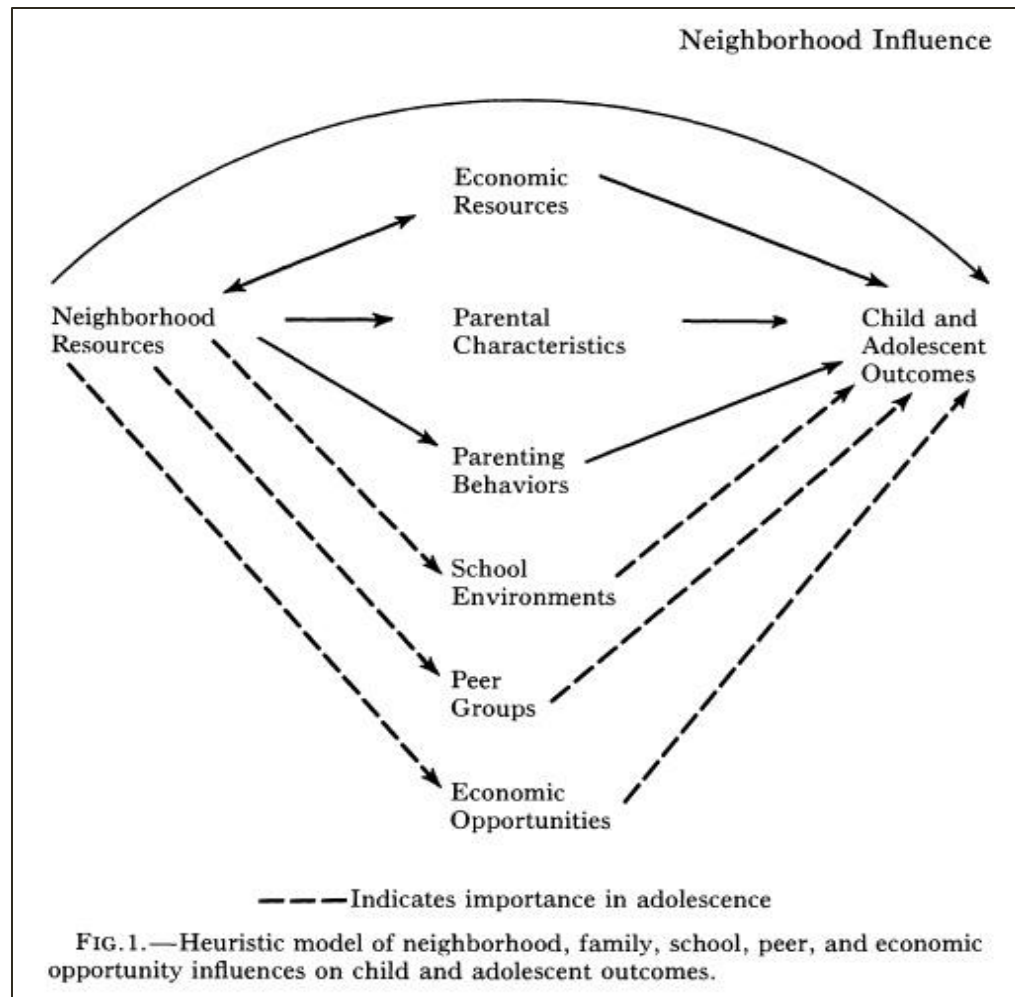
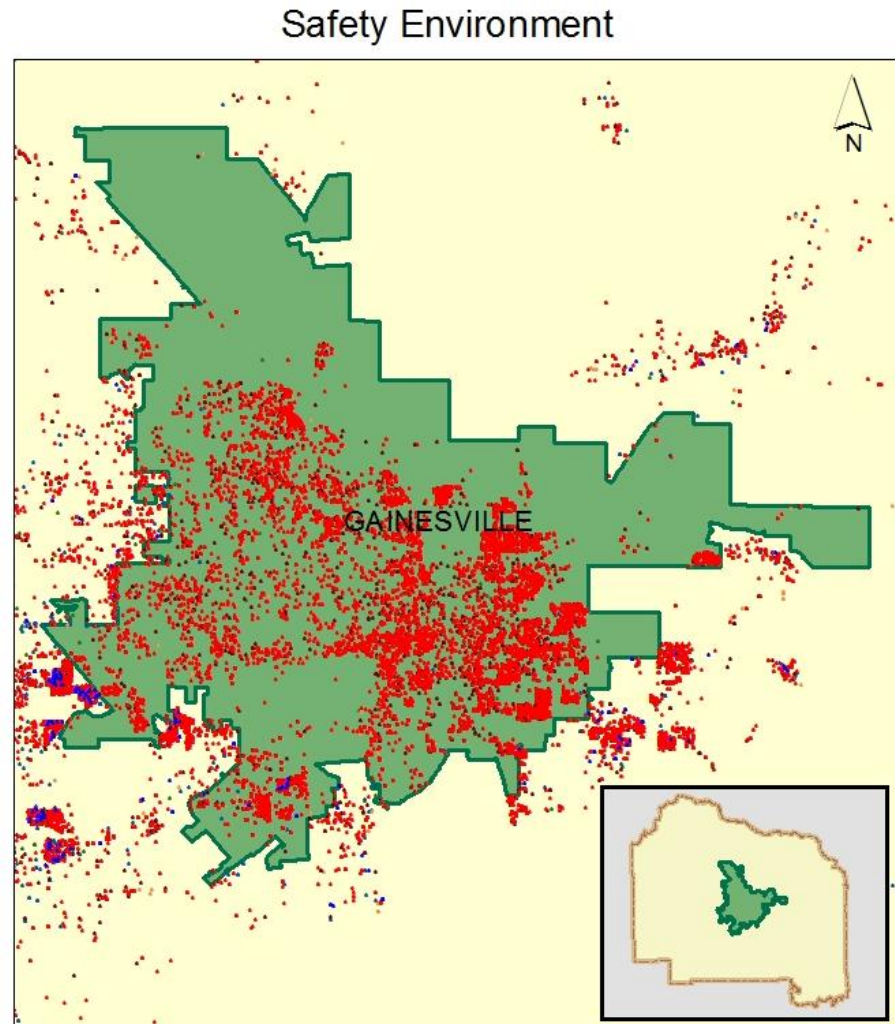


Figure from Brooks-Gunn et al., 1993

Safety Environment Components

Selected Attributes:

- Incarcerated and convicted felons
- Domestic violence
- Child neglect and abuse
- Sex offenders
- Structural code violations

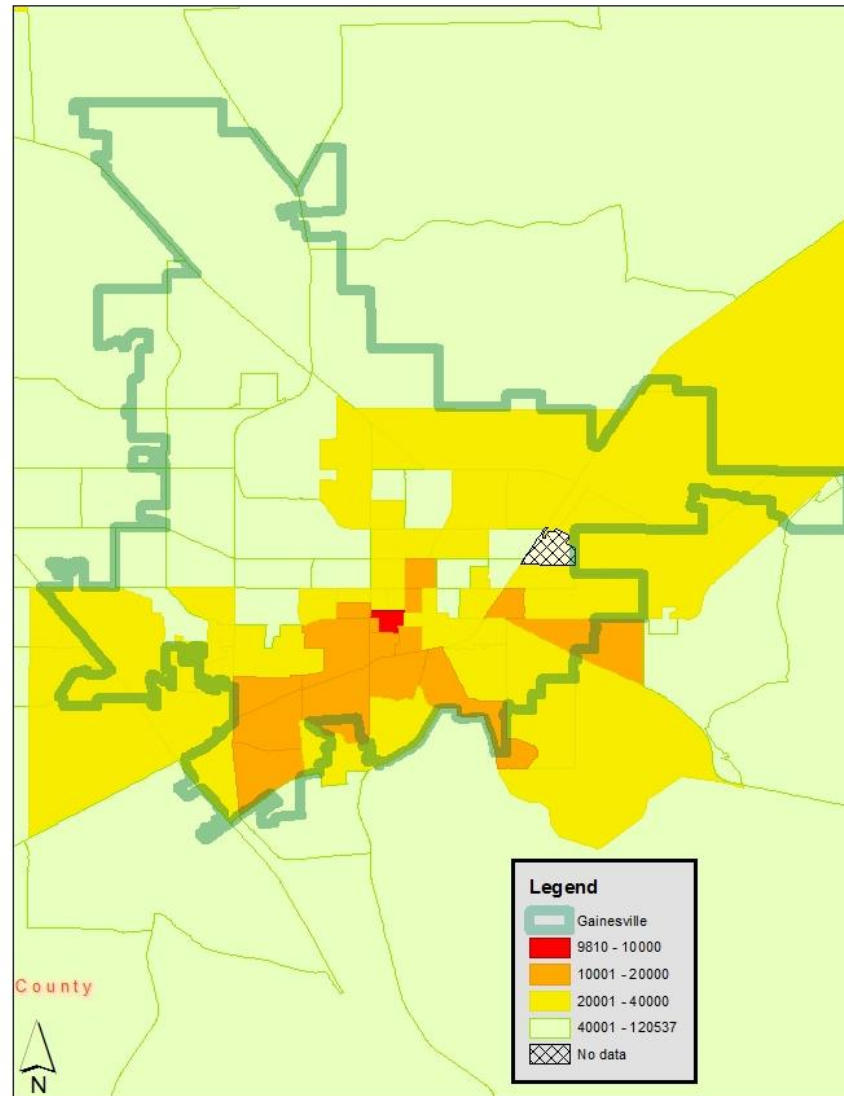


Financial Components

Household Income by Block Group

Selected Attributes:

- Household income of less than \$40,000.
- Student meal assistance
- Assisted housing

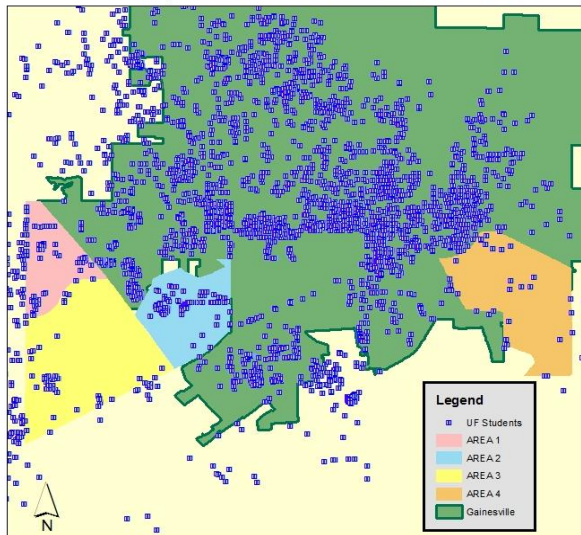


Socio-demographic Components

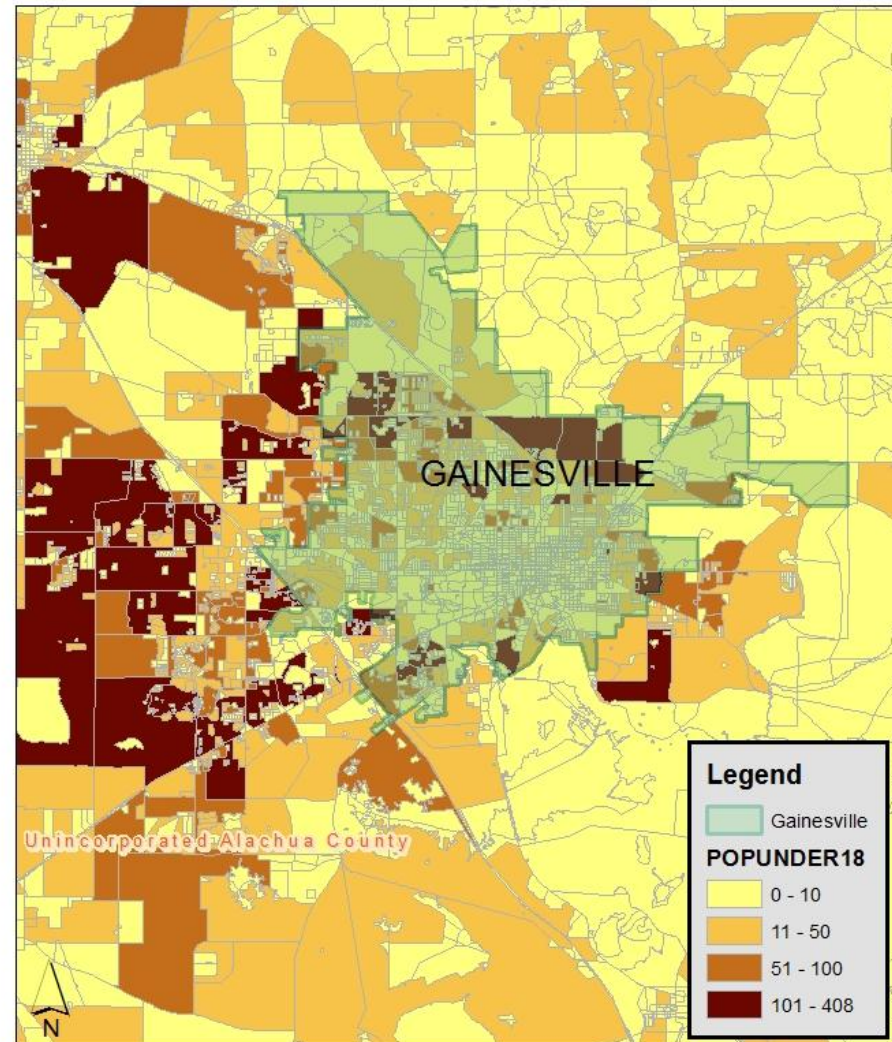
Selected Attributes

- Densely populated areas with highest concentration of individuals under 18 years of age
- High concentration of college students

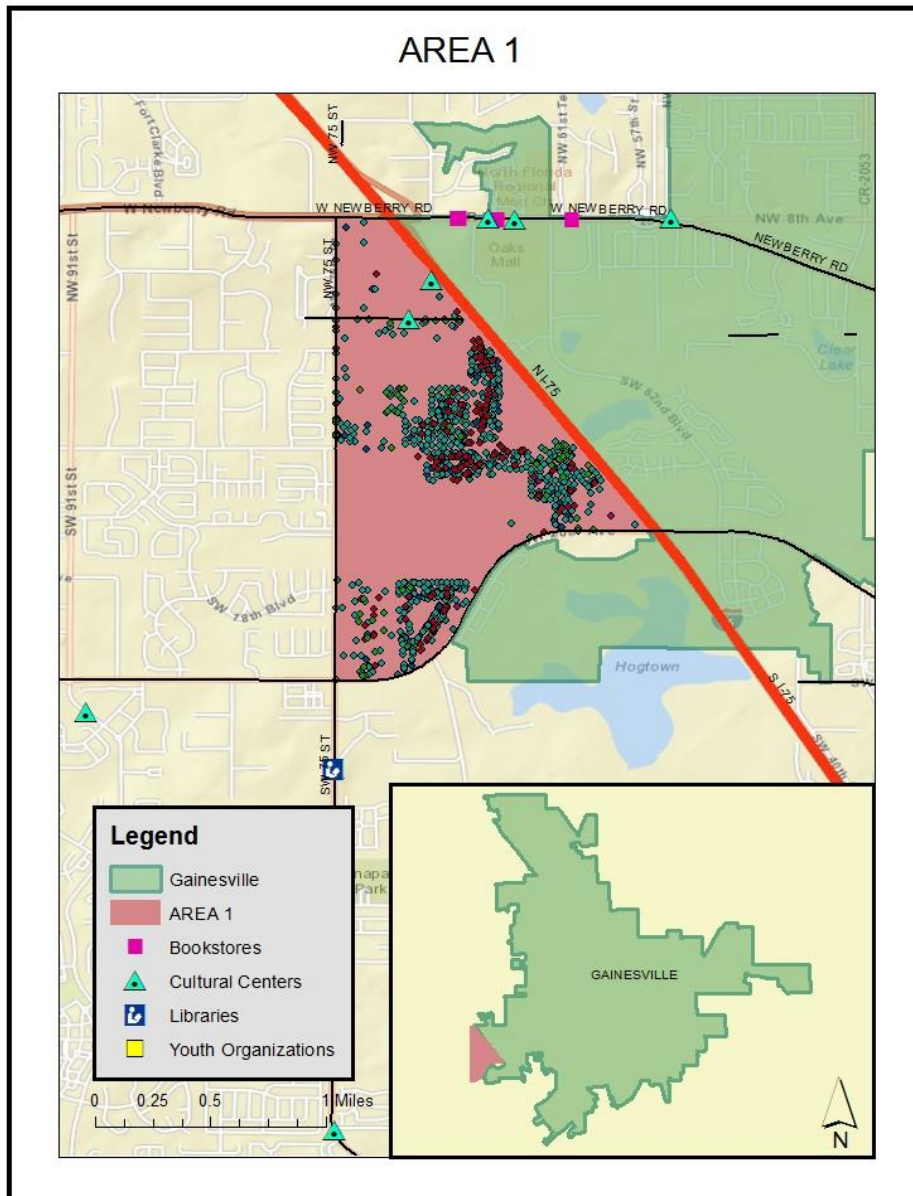
University of Florida Student Residences



Population Under 18 Years Old



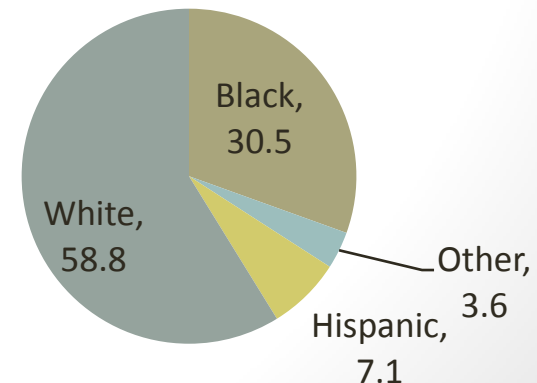
Area 1



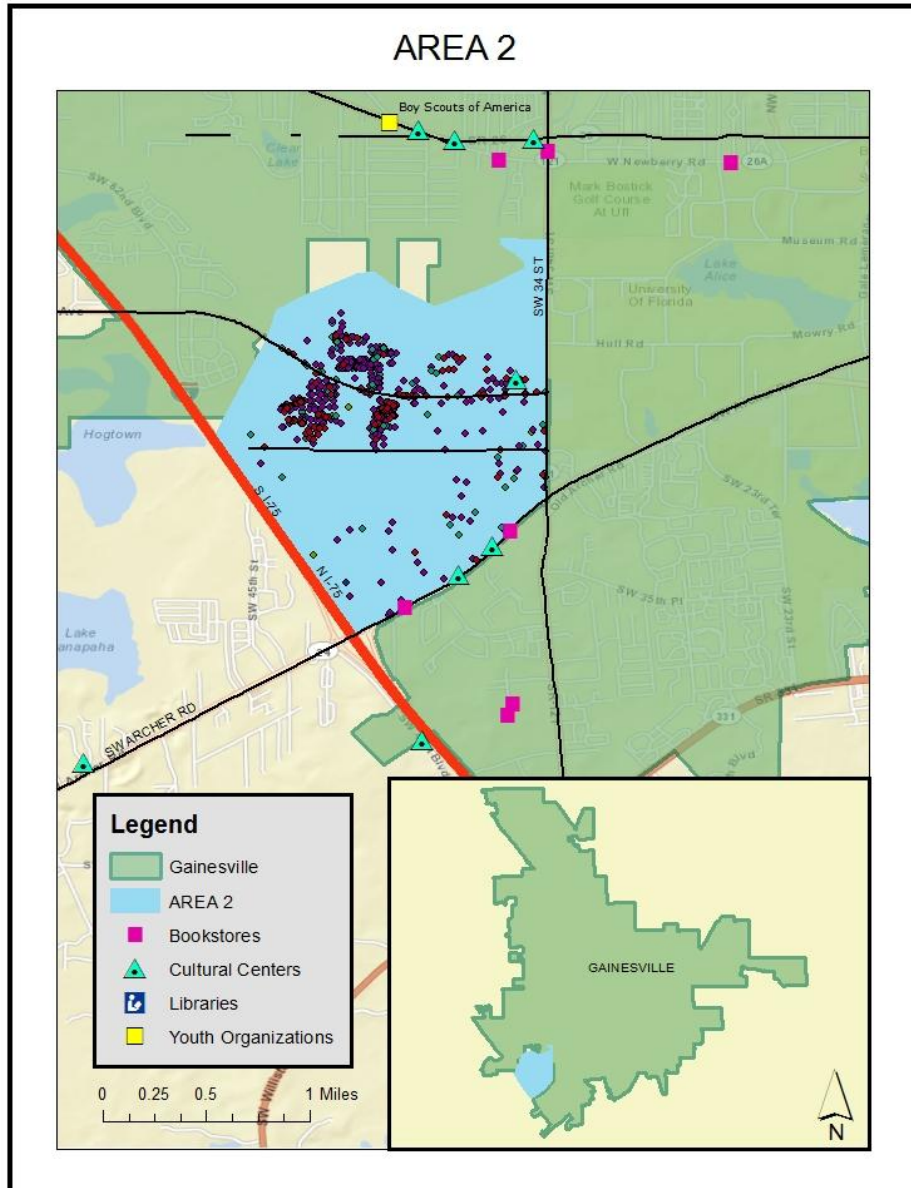
- Major Roadways
 - Newberry Rd
 - SW 20th / SW 24th Ave
 - I-75
 - NW 75th St

Layer	Data Points
Assisted Rental	4
Assisted Housing	4
UF Students	205
Meal Assistance	490
Incarceration 2007	2120
Incarcerated Convict	1295
Structural Code Violation	90
Child Neglect/Abuse	82
Domestic Violence	504
Sex Offenders	16

Race Distribution



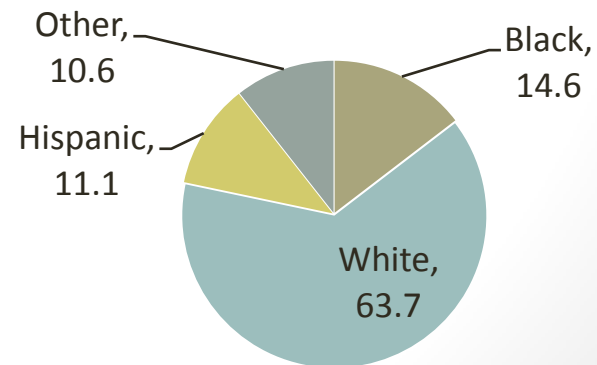
Area 2



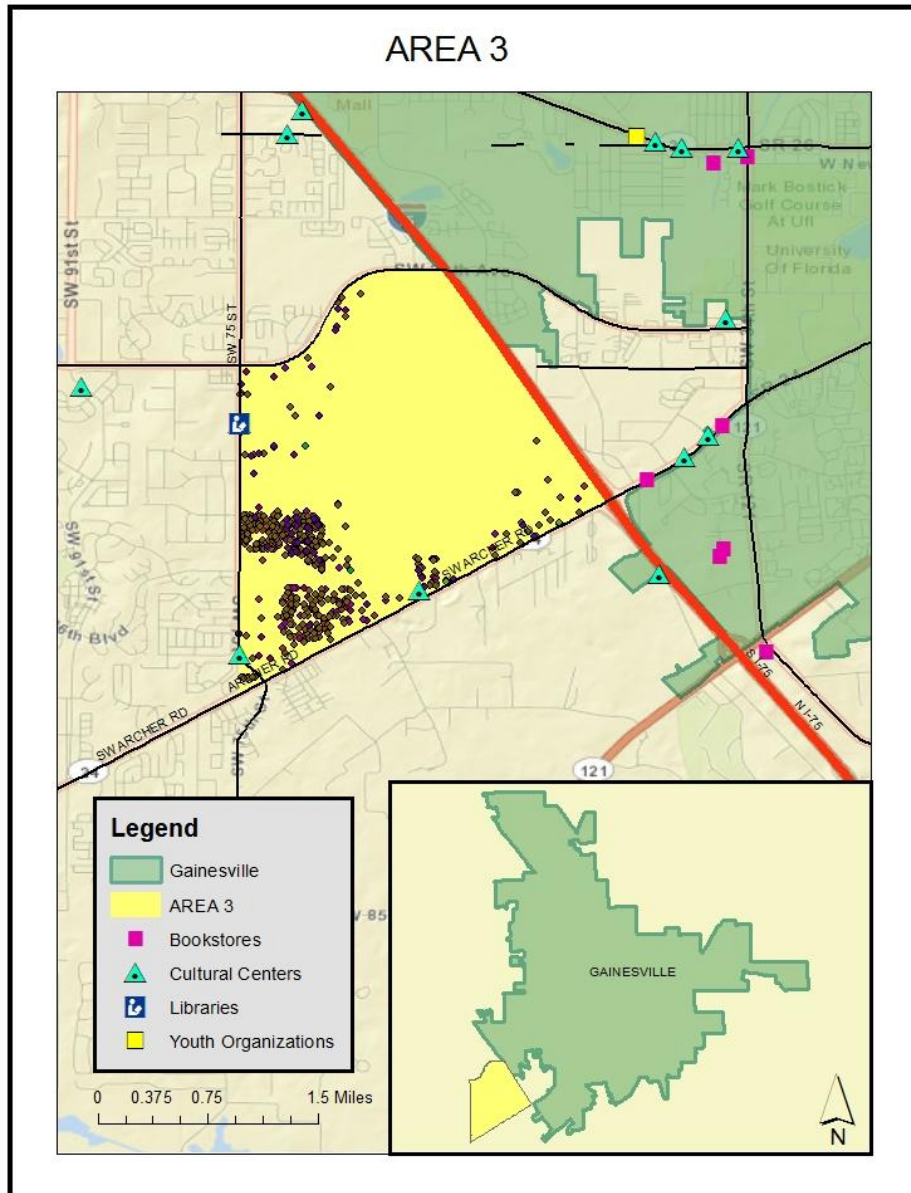
- Major Roadways
 - SW 20th Ave
 - Archer Rd
 - SW 34th St
 - I-75

Layer	Data Points
Assisted Rental	0
Assisted Housing	0
UF Students	1501
Meal Assistance	223
Incarceration 2007	1083
Incarcerated Convict	548
Structural Code Violation	12
Child Neglect/Abuse	9
Domestic Violence	82
Sex Offenders	5

Race Distribution



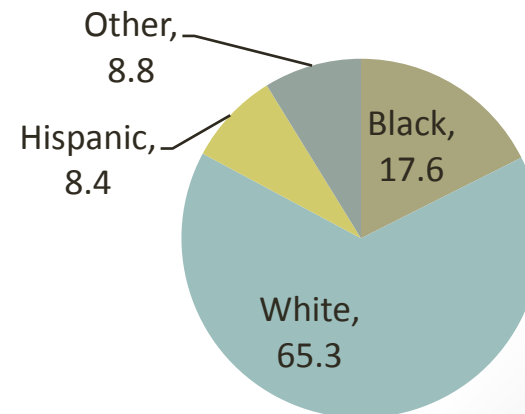
Area 3



- Major Roadways
 - SW 20th / SW 24th Ave
 - Archer Rd
 - I-75
 - SW 75th St

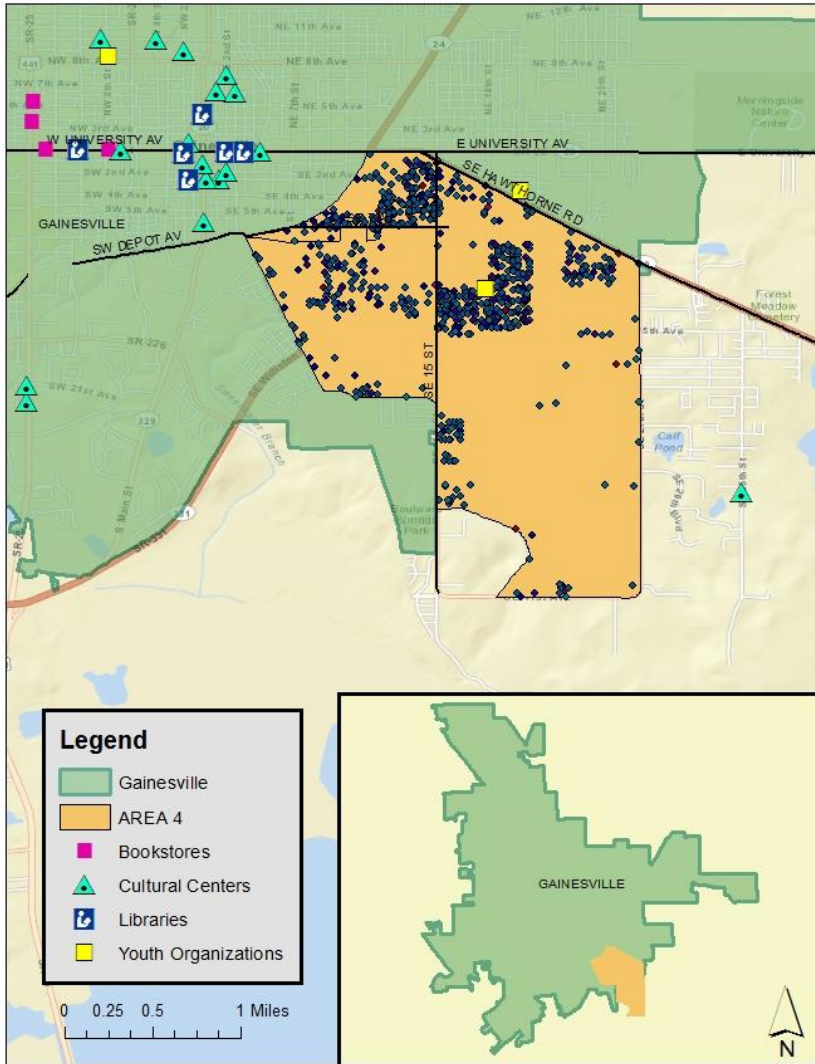
Layer	Data Points
Assisted Rental	0
Assisted Housing	2
UF Students	344
Meal Assistance	263
Incarceration 2007	762
Incarcerated Convict	467
Structural Code Violation	52
Child Neglect/Abuse	31
Domestic Violence	203
Sex Offenders	11

Race Distribution



Area 4

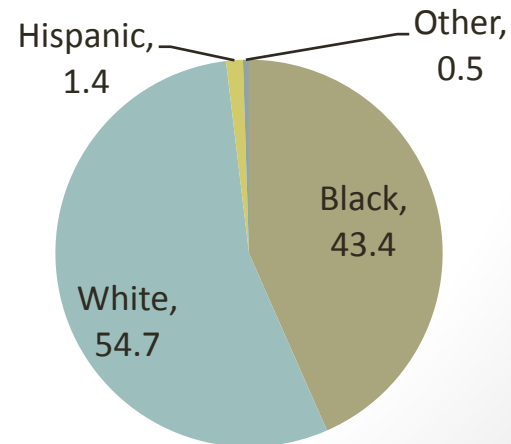
AREA 4



- Major Roadways
 - E University Ave
 - SW Depot Ave
 - SE 11th St
 - SE 15th St
 - SW Hawthorne Rd

Layer	Data Points
Assisted Rental	2
Assisted Housing	2
UF Students	28
Meal Assistance	105
Incarceration 2007	1139
Incarcerated Convict	1062
Structural Code Violation	1
Child Neglect/Abuse	5
Domestic Violence	12
Sex Offenders	10

Race Distribution



“A major part of the population is vulnerable because of location... places associated with underdeveloped or deteriorating infrastructure; lack of employment opportunities; inadequate medical, social, and educational services; poor transportation and communication facilities; high crime and victimization; and exposure to environmentally adverse conditions.”

(Mechanic & Tanner, 2007)

Review of Results

- Incarceration and other factors can lead to low family income and maternal hardship which can negatively affect children
- Community resources are around these areas, but they're not being utilized and access can be difficult for children (and adults) in vulnerable neighborhoods
- Its about the ACCESSIBILITY not the AVAILABILITY



Advocacy

- Build more libraries and other community centers that are not separated from vulnerable areas by barriers
- Increase bus routes and/or create bus routes that go directly to youth centers and book stores
- Increase anti-drug programs
- Education outreach
- Public funding and support

